
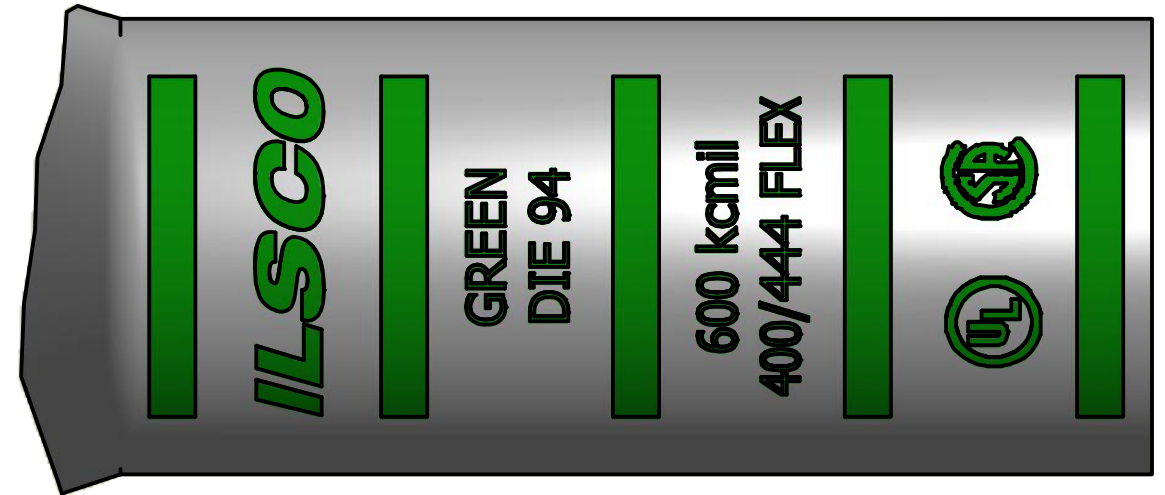
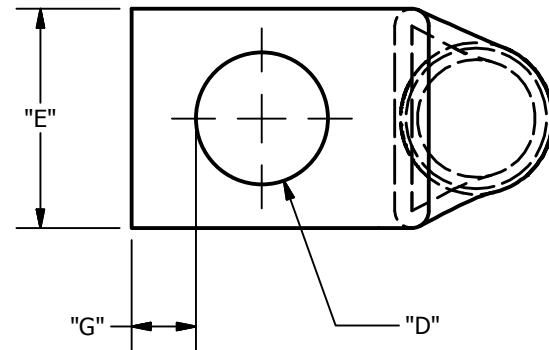
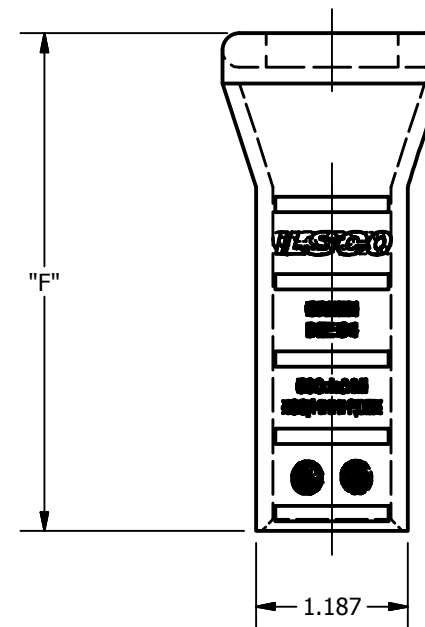
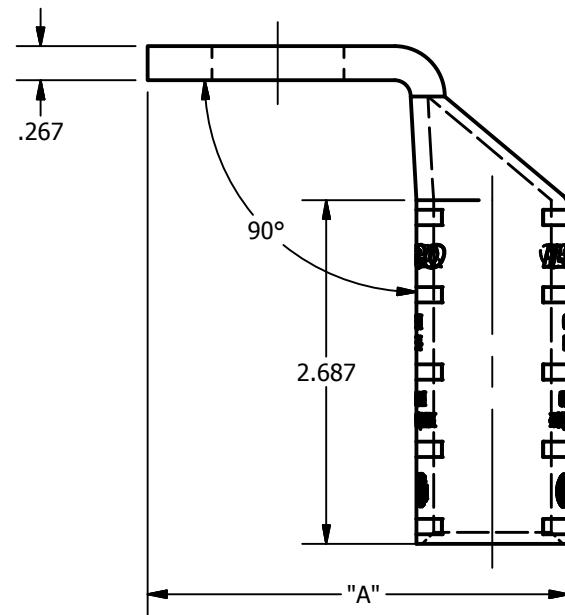


SCREW: NONE	MATERIAL: COPPER	REV: D	 800-776-9775 www.ilSCO.com
CAT. NO.: SEE CHART	PLATING: EL-TIN	DRAWN BY:DW SCALE: NTS	
INFORMATION SHEET:FORM 157	MARKING: SEE CHART	DATE:6/3/2008 SIZE: B	
			DWG NO: Y1603-S-9
			SHEET: 1 OF 1



DETAIL C
INK MARK TOP & BOTTOM



CATALOG NUMBER	"A"	"D"	"E"	"F"	"G"	TANG MARKING
CLNB-600-12-9	2.596	0.562	1.712	4.126	0.265	UL, ILSCO, CSA, CLNB-600-12-9, 1/2, 600 kcmil, 400/444 FLEX, DIE 94
CLNB-600-58-9	2.783	0.656	1.712	4.126	0.343	UL, ILSCO, CSA, CLNB-600-58-9, 5/8, 600 kcmil, 400/444 FLEX, DIE 94
CLNB-600-34-9	3.033	0.781	1.712	4.126	0.359	UL, ILSCO, CSA, CLNB-600-34-9, 3/4, 600 kcmil, 400/444 FLEX, DIE 94
CLNB-600-78-9	3.283	0.906	1.712	4.126	0.437	UL, ILSCO, CSA, CLNB-600-78-9, 7/8, 600 kcmil, 400/444 FLEX, DIE 94
CLNB-600-38-9	2.221	0.406	1.712	4.126	0.211	UL, ILSCO, CSA, CLNB-600-38-9, 3/8, 600 kcmil, 400/444 FLEX, DIE 94
CLNB-600-516-9	2.221	0.343	1.712	4.126	0.180	UL, ILSCO, CSA, CLNB-600-516-9, 5/16, 600 kcmil, 400/444 FLEX, DIE 94
CLNB-600-1-9	3.471	1.031	1.712	4.126	0.500	UL, ILSCO, CSA, CLNB-600-1-9, 1, 600 kcmil, 400/444 FLEX, DIE 94